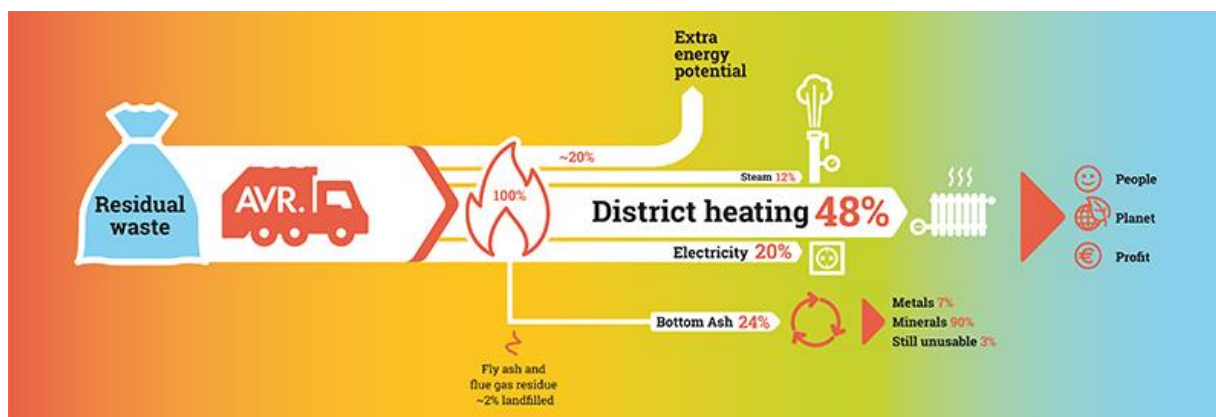


AVR - Global Presentation of the Power Plant

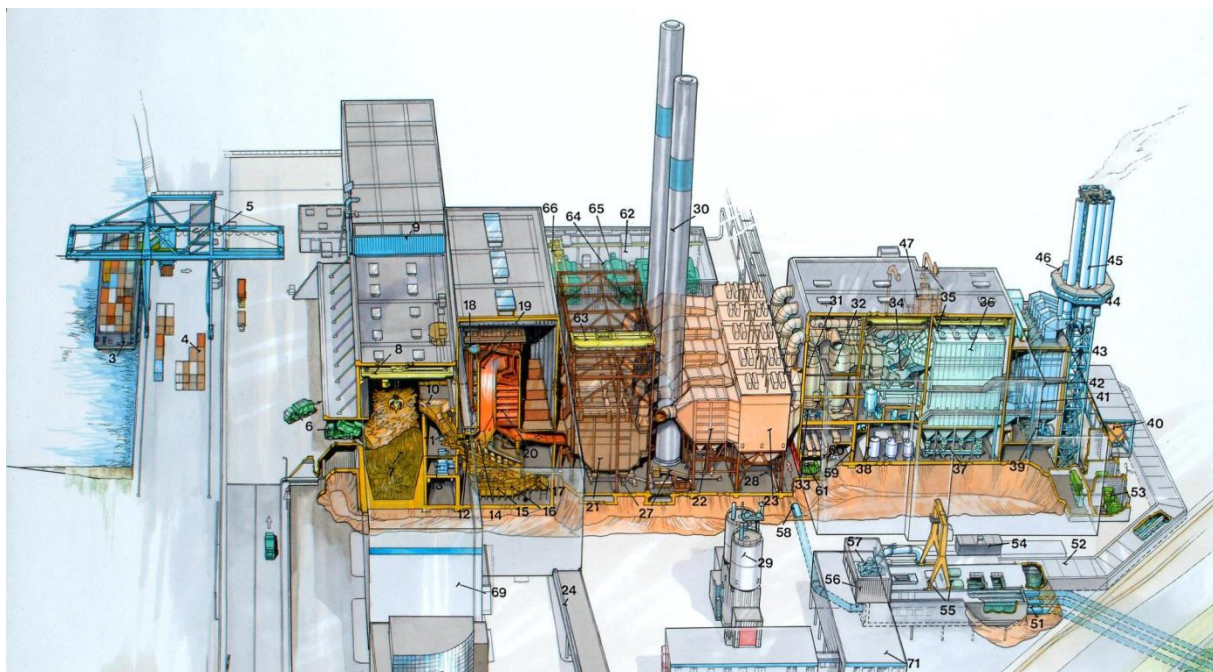
Some facts:

- AVR is the largest Energy-from-Waste (EfW) company in the Netherlands.
- EfW had a permitted capacity of over 1,700 kt/year and 699 MWt/h of total installed thermal capacity (steam and heat) of which 60% is classified as renewable energy.
- The Netherlands has a waste processing capacity of 8 m tons, with AVR accounting for 1.7 m tons of that (21%)

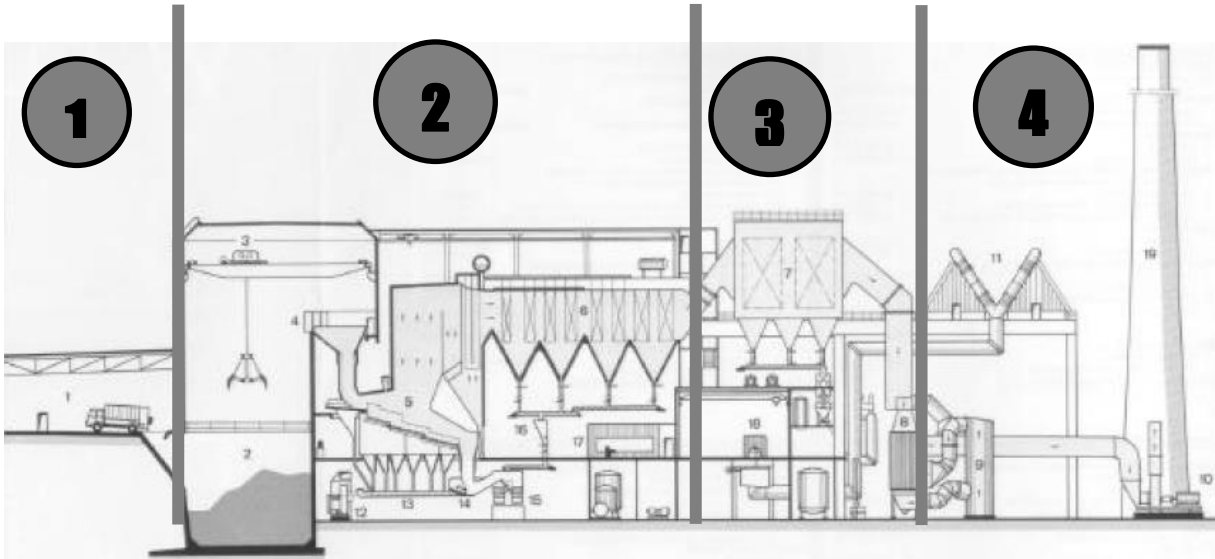
Global explanation of the Process:



AVR Power Plant Layout:



Power Plant process sideview:



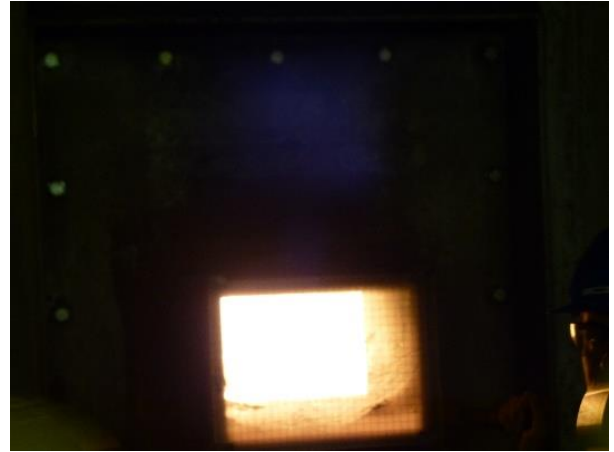
1 : Incoming waste (from trucks, trains or boats)



2 : Waste storage area (bunker), and waste sorting.



3 : Waste inceneration.



4 : Air cleansing / steam exhaust / ashes evacuation.

